

# 1 Hardware Installation

## 1.1 Choosing the Best Location for Wireless Operation

Many environmental factors may affect the effective wireless function of the DSL Router. If this is the first time that you set up a wireless network device, read the following information:

The access point can be placed on a shelf or desktop, ideally you should be able to see the LED indicators in the front, as you may need to view them for troubleshooting. Designed to go up to 100 meters indoors and up to 300 meters outdoors, wireless LAN lets you access your network from anywhere you want. However, the numbers of walls, ceilings, or other objects that the wireless signals must pass through limit signal range. Typical ranges vary depending on types of materials and background RF noise in your home or business.

## 1.2 Connecting the Device

Please follow the steps below to connect the device.

- Step1** Connect the **ADSL** port of the DSL router with a telephone cable.
- Step2** Connect the LAN port of the DSL router to the network card of the PC via an Ethernet cable.
- Step3** Plug one end of the power adapter to the wall outlet and connect the other end to the Power port of the DSL Router.

The following figure displays the connection of the DSL router, PC, and telephones.

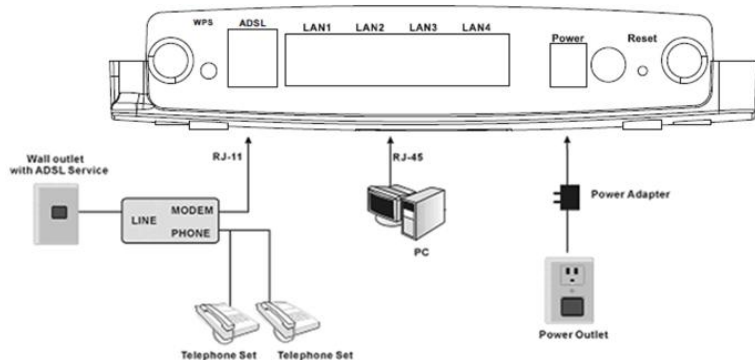



Figure 1 Connecting the DSL router

The following table describes the interfaces or the buttons on the rear panel.

Interface	Description
WPS	This button is used for enabling WPS PBC mode. If WPS is enabled, press this button, and then the wireless router starts to accept the negotiation of PBC mode.
ADSL	RJ-11 port, for connecting the ADSL cable.
LAN 1~4	RJ-45 port, for connecting the router to a PC or another network device.
Power	Power interface, for connecting the power adapter.
	Power switch.
Reset	Press the button for at least 1 second and then release it. System restores the factory default settings.

**Warning:**

Do not press the **Reset** button unless you want to clear the current settings. The **Reset** button is in a small circular hole on the rear panel. If you want to restore the default settings, please press the **Reset** button gently for 1 second with a fine needle inserted into the hole and then release the button. The system reboots and returns to the factory defaults.

The power specification is 12V, 1A. If the power adapter does not match the specification, it may damage the device

## 2 PC Network Configuration and Login

### 2.1 PC Network Configuration

Each network interface on the PC should either be configured with a statically defined IP address and DNS address, or be instructed to automatically obtain an IP address using the network DHCP server. DSL router provides a DHCP server on its LAN and it is recommended to configure your LAN to automatically obtain its IP address and DNS server IP address.

The configuration principle is identical but should be carried out differently on each operating system.

The following displays the **TCP/IP Properties** dialog box on Windows XP.

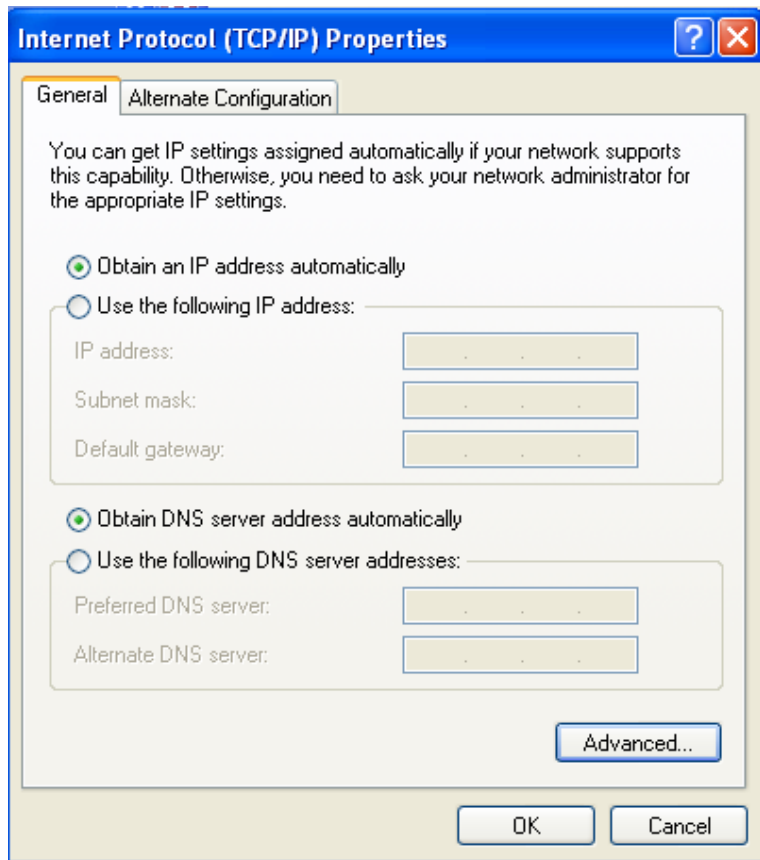


Figure 2 IP and DNS configuration

TCP/IP configuration steps for Windows XP are as follows:

- Step1** Choose **Start > Control Panel > Network Connections**.
- Step2** Right-click the Ethernet connection icon and choose **Properties**.
- Step3** On the **General** tab, select the **Internet Protocol (TCP/IP)** component and click **Properties**.

- Step4**     The **Internet Protocol (TCP/IP) Properties** window appears.
- Step5**     Select the **Obtain an IP address automatically** radio button.
- Step6**     Select the **Obtain DNS server address automatically** radio button.
- Step7**     Click **OK** to save the settings.

## 2.2 Logging In to the DSL Router

To log in to the DSL router, do as follows:

- Step1**     Open a Web browser on your computer.
- Step2**     Enter **http://192.168.1.1** (the default IP address of the DSL router) in the address bar. The login page appears.
- Step3**     Enter the user name and the password. The default username and password of the super user are **admin** and **admin**. The username and password of the common user are **user** and **user**. You need not enter the username and the password again if you select the option **Remember my password**. It is recommended to change these default values after logging in to the DSL router for the first time.
- Step4**     Click **OK** to log in to the Web page. Otherwise, please click **Cancel** to exit the login page.

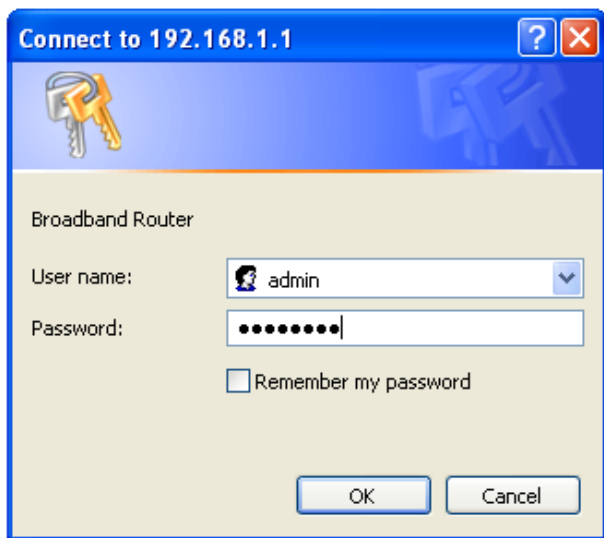


Figure 3 Login page

After logging in to the DSL router as a super user, you can query, configure, and modify all the settings, and diagnose the system.

## 3 Web-Based Management

This chapter describes how to use Web-based management of the DSL router, which allows you to configure and control all of DSL router features and system parameters in a user-friendly GUI.

### 3.1 Quick Setup

Choose **Quick Setup** and the following page is displayed.

#### Quick Setup

In the boxes below, enter the PPP user name and password that your ISP has provided to you.

PPP Username:   
PPP Password:

Apply/Save

Enter the username and password your ISP has provided to you. The following page is displayed if quick setup is successful. Click **Next** to see the device information.

#### Quick Setup Successful

The Quick Setup has configured your WAN and wireless LAN connections

Click on "Next" button to see device info.

Next